

4

3

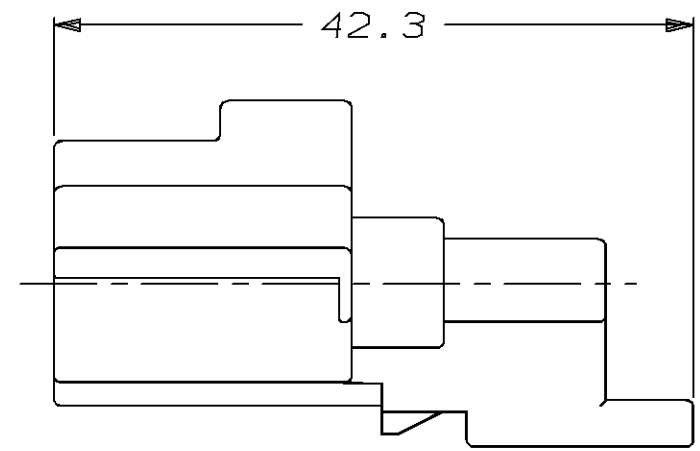
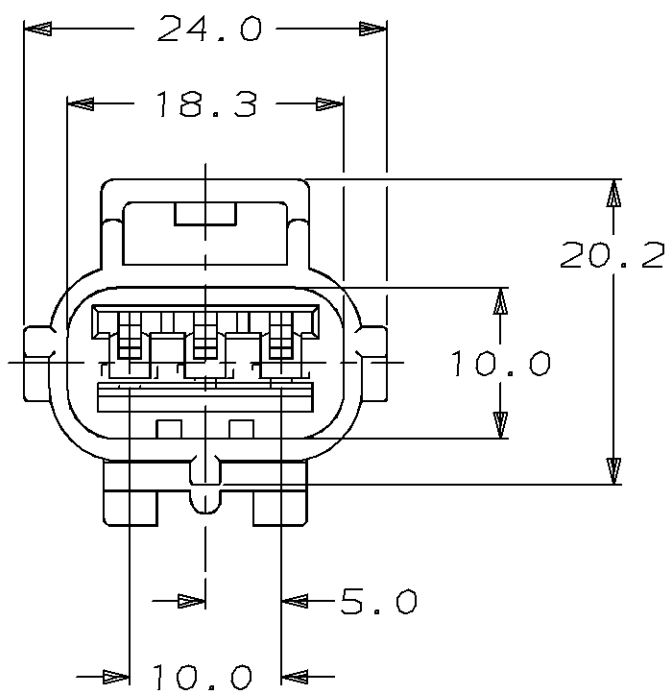
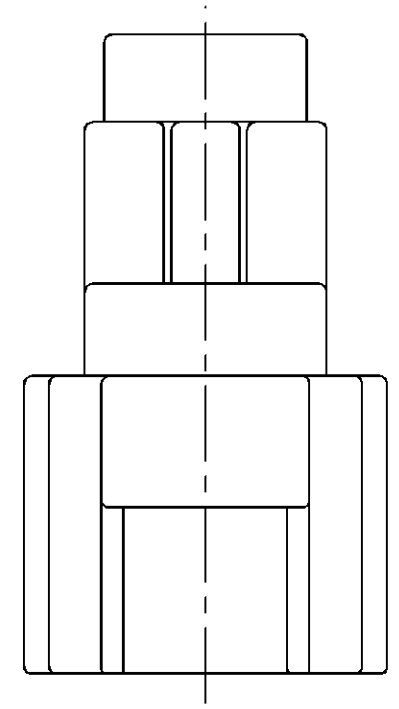
2

1

THIS DRAWING IS UNPUBLISHED. RELEASED FOR PUBLICATION, 19 .

© COPYRIGHT 19 BY AMP INCORPORATED. ALL RIGHTS RESERVED.

LOC	DIST	REVISIONS					
P	LTR	DESCRIPTION	DATE	DWN	APVD		
G	16	0		INITIAL RELEASE	02/15/96	KW	JK
		01		ADDED MATL & FINISH TO TITLE BLOCK	03/06/96	KW	JK
		A		REV PER ECN #OKS0-0015-96	09/23/96	KW	JK



184192-1

PART NUMBER

<small>THIS DRAWING IS A CONTROLLED DOCUMENT FOR AMP INCORPORATED. IT IS SUBJECT TO CHANGE AND THE CONTROLLING ENGINEERING ORGANIZATION SHOULD BE CONTACTED FOR THE LATEST REVISION.</small>		DWN	K. WISE	02/15/96	 AMP Incorporated Harrisburg, PA 17105-3608
DIMENSIONS:		CHK	J. KUNKLE	03/01/96	
mm		APVD	J. KUNKLE	03/01/96	
		PRODUCT SPEC	NAME		
TOLERANCES UNLESS OTHERWISE SPECIFIED: 0 PLC ±- 1 PLC ±0.3 2 PLC ±- 3 PLC ±- 4 PLC ±- ANGLES ±- FINISH		APPLICATION SPEC	SIZE		A3
MATERIAL		WEIGHT	CAGE CODE		00779
PBT, 15% GLASS FILLED		CUSTOMER DRAWING	DRAWING NO		C-184192
			SCALE	SHEET	1 OF 1
			2:1	REV	A